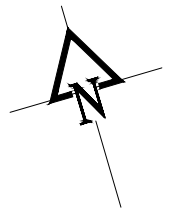


INLAY 2" WIDE CROSSWALK STRIPING IN EXISTING CONCRETE. CROSSWALK LINES SHALL NOT BE LOCATED IN VEHICLE WHEEL PATH. FINAL LOCATION OF STRIPES TO BE APPROVED BY ENGINEER.

CROSSWALK LINES X-1, X-2, X-3, X-4



CALL 811
TWO WORKING DAYS
BEFORE YOU DIG



REVISIONS:

**2017 - COLLEGE DRIVE IMPROVEMENTS
MAIN AVENUE TO 4TH AVENUE
SIGNING, STRIPING, AND SIGNALS PLAN**

Russell Planning & Engineering, Inc.
Civil Engineering Services
934 Main Avenue, Unit C
Durango, Colorado 81301
Phone: (970) 385-4546
Fax: (970) 385-4502



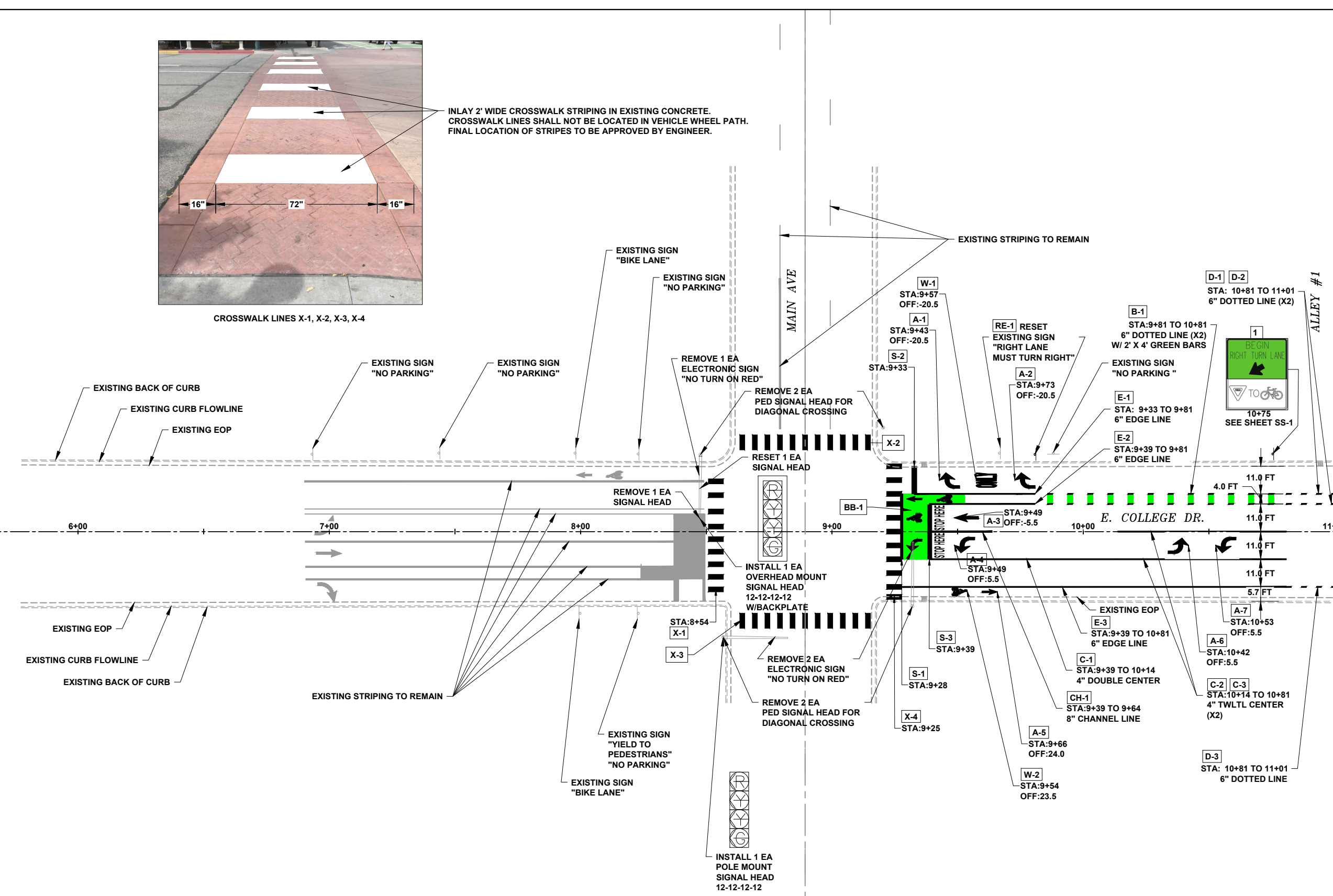
Drawn: **AM**
Drafted: **AM**
Checked: **JH**

Date of Submittal
9/25/2017

29 OF 35

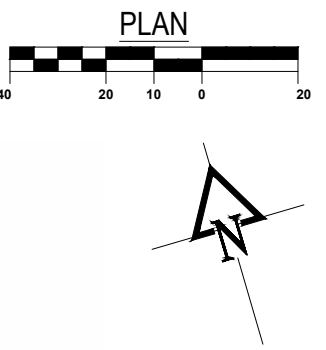
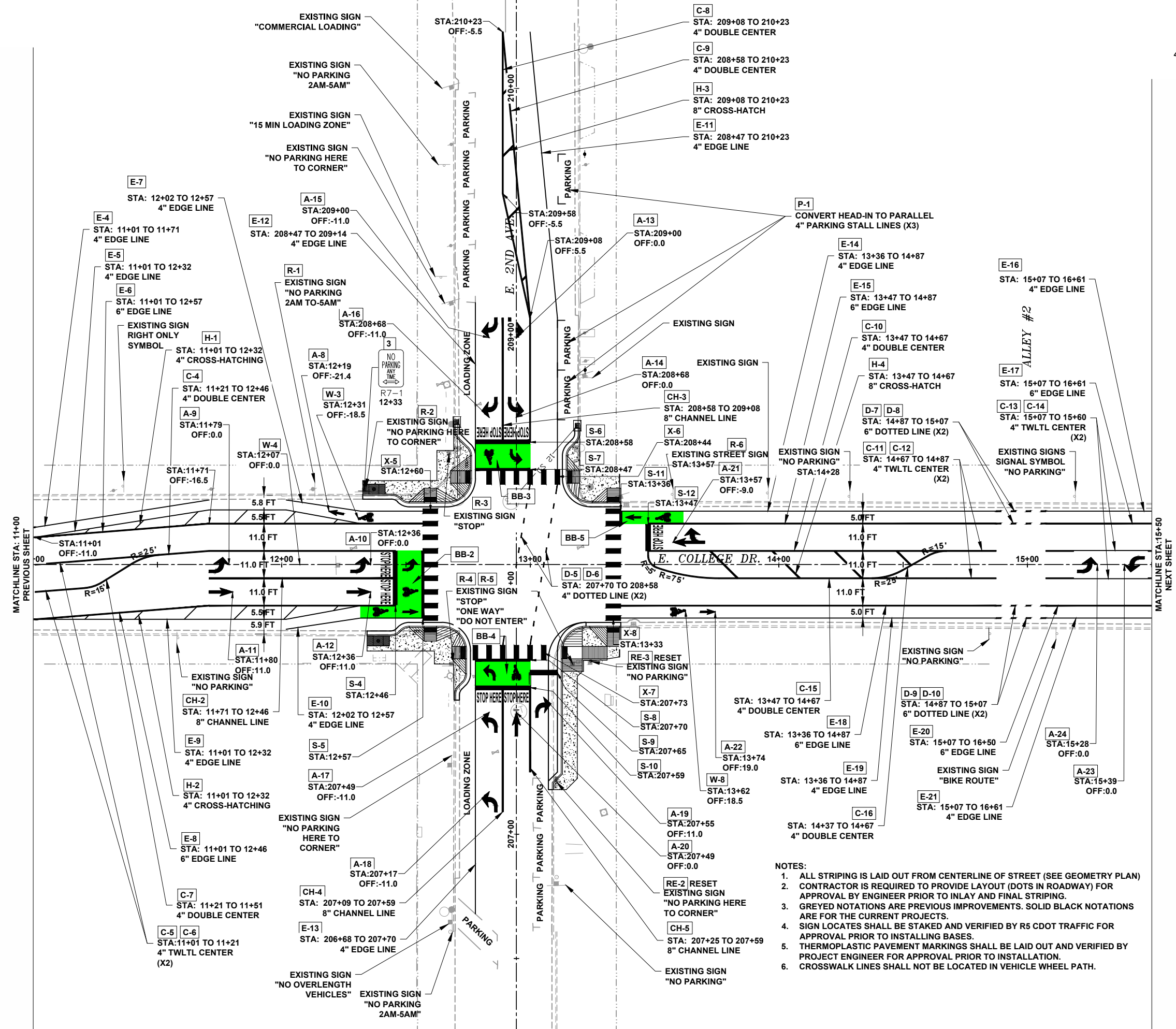
SS-3

File Name: R:\Current Projects\Land Projects 3\Durango College and 2nd Signal\ACAD\Level 3 Production Dwg\SIGNING AND STRIPING Plotted: 9/25/2017 4:32 PM Plot Style: HALF-STB Plotted By: ALAN MILLER



- NOTES:**
1. ALL STRIPING IS LAID OUT FROM CENTERLINE OF STREET (SEE GEOMETRY PLAN)
 2. CONTRACTOR IS REQUIRED TO PROVIDE LAYOUT (DOTS IN ROADWAY) FOR APPROVAL BY ENGINEER PRIOR TO INLAY AND FINAL STRIPING.
 3. GREYED NOTATIONS ARE PREVIOUS IMPROVEMENTS. SOLID BLACK NOTATIONS ARE FOR THE CURRENT PROJECTS.
 4. SIGN LOCATES SHALL BE STAKED AND VERIFIED BY R5 CDOT TRAFFIC FOR APPROVAL PRIOR TO INSTALLING BASES.
 5. THERMOPLASTIC PAVEMENT MARKINGS SHALL BE LAID OUT AND VERIFIED BY PROJECT ENGINEER FOR APPROVAL PRIOR TO INSTALLATION.
 6. CROSSWALK LINES SHALL NOT BE LOCATED IN VEHICLE WHEEL PATH.

====



MATCHLINE STA: 11+00
PREVIOUS SHEET

MATCHLINE STA: 15+00
NEXT SHEET

- NOTES:
1. ALL STRIPING IS LAID OUT FROM CENTERLINE OF STREET (SEE GEOMETRY PLAN)
 2. CONTRACTOR IS REQUIRED TO PROVIDE LAYOUT (DOTS IN ROADWAY) FOR APPROVAL BY ENGINEER PRIOR TO INLAY AND FINAL STRIPING.
 3. GREYED NOTATIONS ARE PREVIOUS IMPROVEMENTS. SOLID BLACK NOTATIONS ARE FOR THE CURRENT PROJECTS.
 4. SIGN LOCATES SHALL BE STAKED AND VERIFIED BY R5 CDOT TRAFFIC FOR APPROVAL PRIOR TO INSTALLING BASES.
 5. THERMOPLASTIC PAVEMENT MARKINGS SHALL BE LAID OUT AND VERIFIED BY PROJECT ENGINEER FOR APPROVAL PRIOR TO INSTALLATION.
 6. CROSSWALK LINES SHALL NOT BE LOCATED IN VEHICLE WHEEL PATH.

REVISIONS:

**2017 - COLLEGE DRIVE IMPROVEMENTS
MAIN AVENUE TO 4TH AVENUE
SIGNING, STRIPING, AND SIGNALS PLAN**

Russell Planning & Engineering, Inc.
Civil Engineering Services
994 Main Avenue, Unit C
Durango, Colorado 81301
Phone: (970) 385-4546
Fax: (970) 385-4502



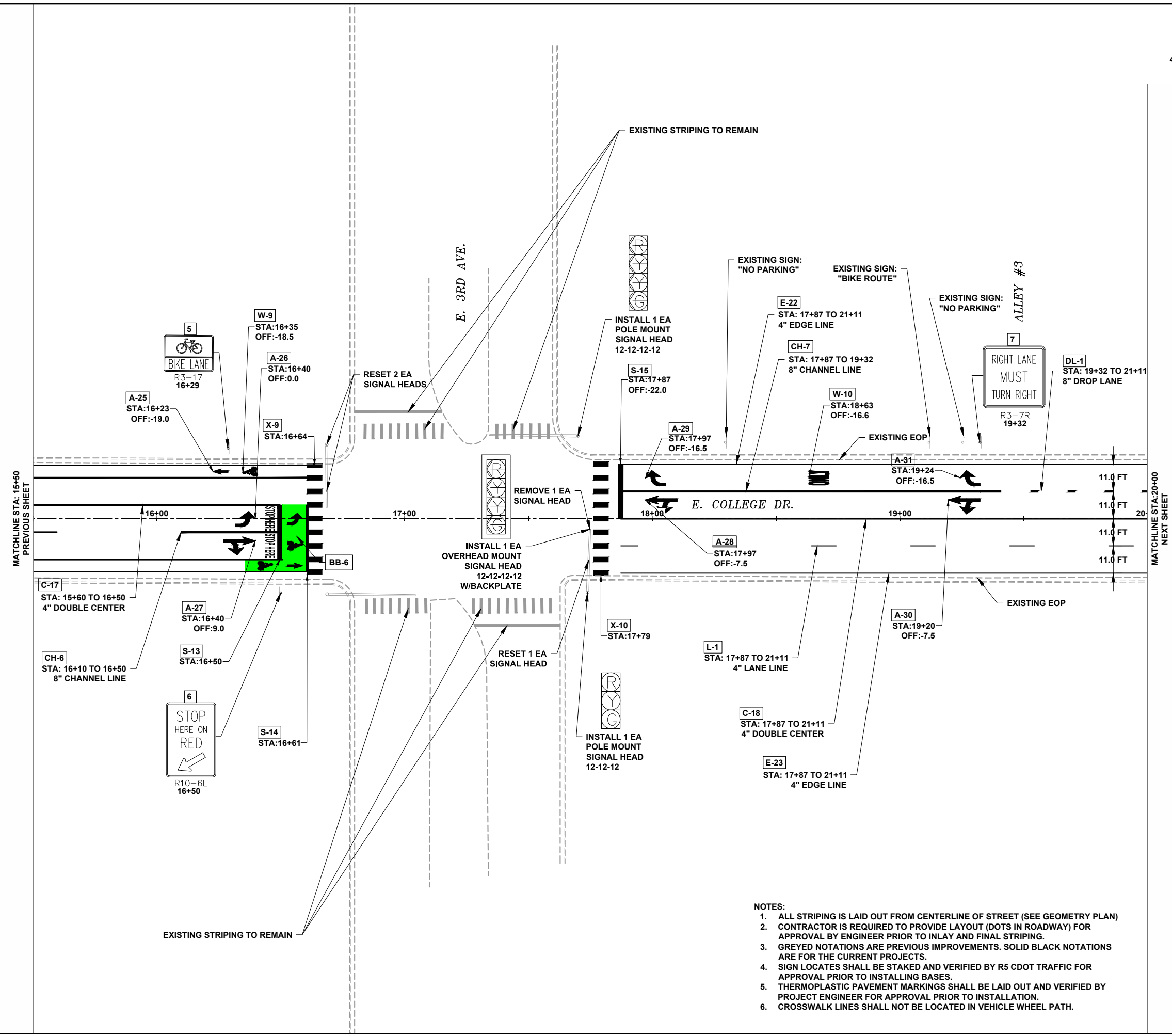
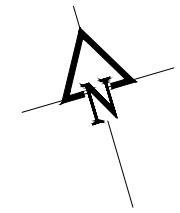
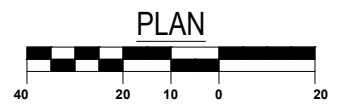
Drawn: AM
Drafted: AM
Checked: JH

Date of Submittal
9/25/2017

30 OF 35

SS-4





MATCHLINE STA: 15+50
PREVIOUS SHEET

MATCHLINE STA: 20+00
NEXT SHEET

- NOTES:**
1. ALL STRIPING IS LAID OUT FROM CENTERLINE OF STREET (SEE GEOMETRY PLAN)
 2. CONTRACTOR IS REQUIRED TO PROVIDE LAYOUT (DOTS IN ROADWAY) FOR APPROVAL BY ENGINEER PRIOR TO INLAY AND FINAL STRIPING.
 3. GREYED NOTATIONS ARE PREVIOUS IMPROVEMENTS. SOLID BLACK NOTATIONS ARE FOR THE CURRENT PROJECTS.
 4. SIGN LOCATES SHALL BE STAKED AND VERIFIED BY R5 CDOT TRAFFIC FOR APPROVAL PRIOR TO INSTALLING BASES.
 5. THERMOPLASTIC PAVEMENT MARKINGS SHALL BE LAID OUT AND VERIFIED BY PROJECT ENGINEER FOR APPROVAL PRIOR TO INSTALLATION.
 6. CROSSWALK LINES SHALL NOT BE LOCATED IN VEHICLE WHEEL PATH.

**2017 - COLLEGE DRIVE IMPROVEMENTS
MAIN AVENUE TO 4TH AVENUE
SIGNING, STRIPING, AND SIGNALS PLAN**

Russell Planning & Engineering, Inc.
Civil Engineering Services
994 Main Avenue, Unit C
Durango, Colorado 81301
Phone: (970) 385-4546
Fax: (970) 385-4502

Drawn: **AM**
Drafted: **AM**
Checked: **JH**

Date of Submittal
9/25/2017

31 OF 35

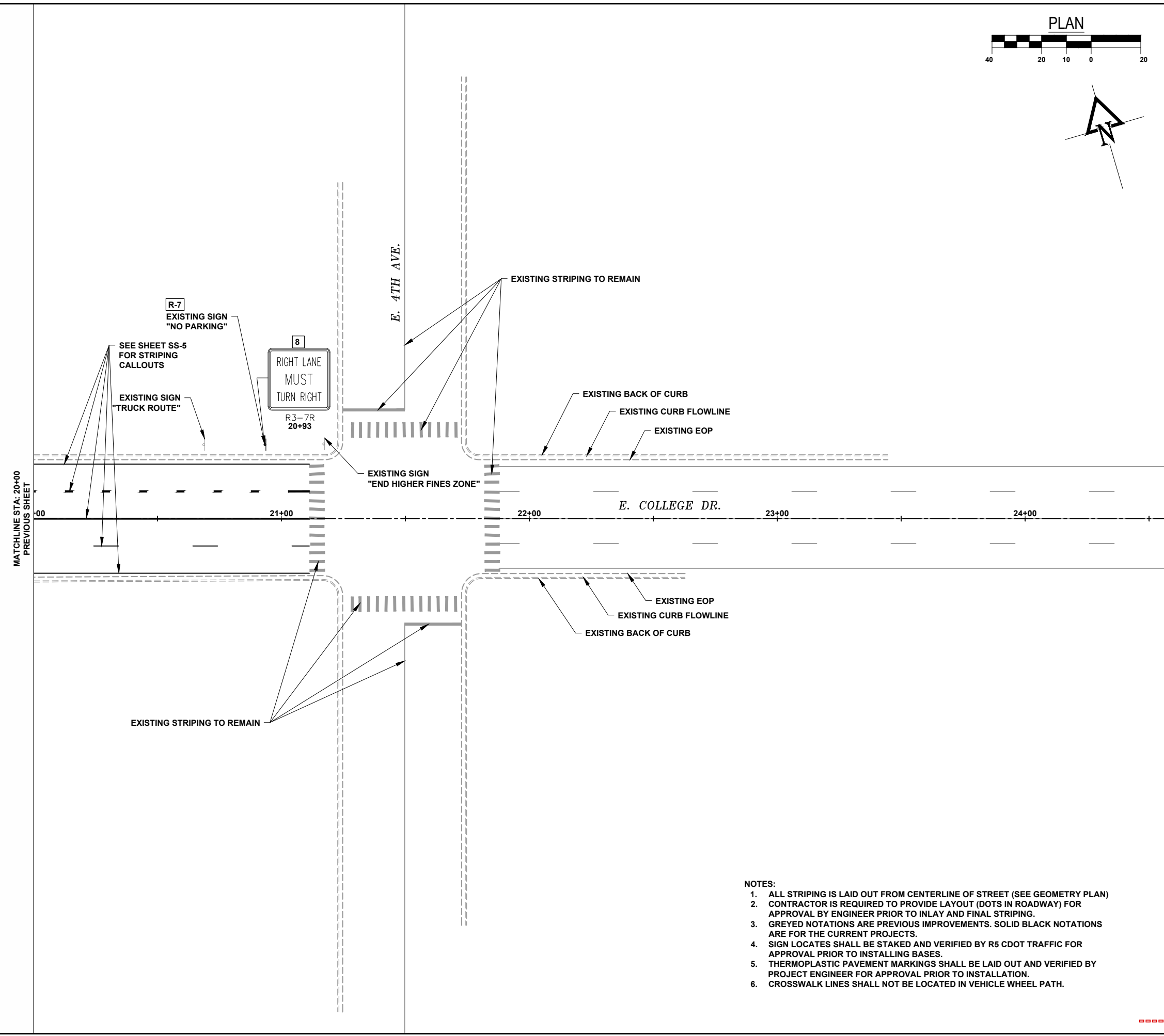
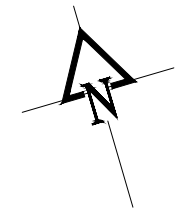
SS-5

REVISIONS:

File Name: R:\Current Projects\Land Projects 3\Durango College and 2nd Signal\ACAD\Level 3 Production Dwg\SIGNING AND STRIPING - Plotted: 9/25/2017 4:32 PM Plot Style: HALF-STB Plotted By: ALAN MILLER

CALL 811
TWO WORKING DAYS
BEFORE YOU DIG

Know what's below.
Call before you dig.



MATCHLINE STA: 20+00
PREVIOUS SHEET

- NOTES:**
1. ALL STRIPING IS LAID OUT FROM CENTERLINE OF STREET (SEE GEOMETRY PLAN)
 2. CONTRACTOR IS REQUIRED TO PROVIDE LAYOUT (DOTS IN ROADWAY) FOR APPROVAL BY ENGINEER PRIOR TO INLAY AND FINAL STRIPING.
 3. GREYED NOTATIONS ARE PREVIOUS IMPROVEMENTS. SOLID BLACK NOTATIONS ARE FOR THE CURRENT PROJECTS.
 4. SIGN LOCATES SHALL BE STAKED AND VERIFIED BY R5 CDOT TRAFFIC FOR APPROVAL PRIOR TO INSTALLING BASES.
 5. THERMOPLASTIC PAVEMENT MARKINGS SHALL BE LAID OUT AND VERIFIED BY PROJECT ENGINEER FOR APPROVAL PRIOR TO INSTALLATION.
 6. CROSSWALK LINES SHALL NOT BE LOCATED IN VEHICLE WHEEL PATH.

811
Know what's below.
Call before you dig.

CALL 811
TWO WORKING DAYS
BEFORE YOU DIG

REVISIONS:

**2017 - COLLEGE DRIVE IMPROVEMENTS
MAIN AVENUE TO 4TH AVENUE
SIGNING, STRIPING, AND SIGNALS PLAN**

Russell Planning & Engineering, Inc.
Civil Engineering Services
934 Main Avenue, Unit C
Durango, Colorado 81301
Phone: (970) 385-4546
Fax: (970) 385-4502

Drawn: **AM**
Drafted: **AM**
Checked: **JH**

Date of Submittal
9/25/2017

32 OF 35

SS-6