

Figure 30 - Trails (All Surfaces) Service Area



**Indoor Pool Service Area**  
Recommended Standard of 0.5 Square Feet per Resident

**City of Durango, Colorado**  
Parks, Open Space, Trails and Recreation  
Master Plan

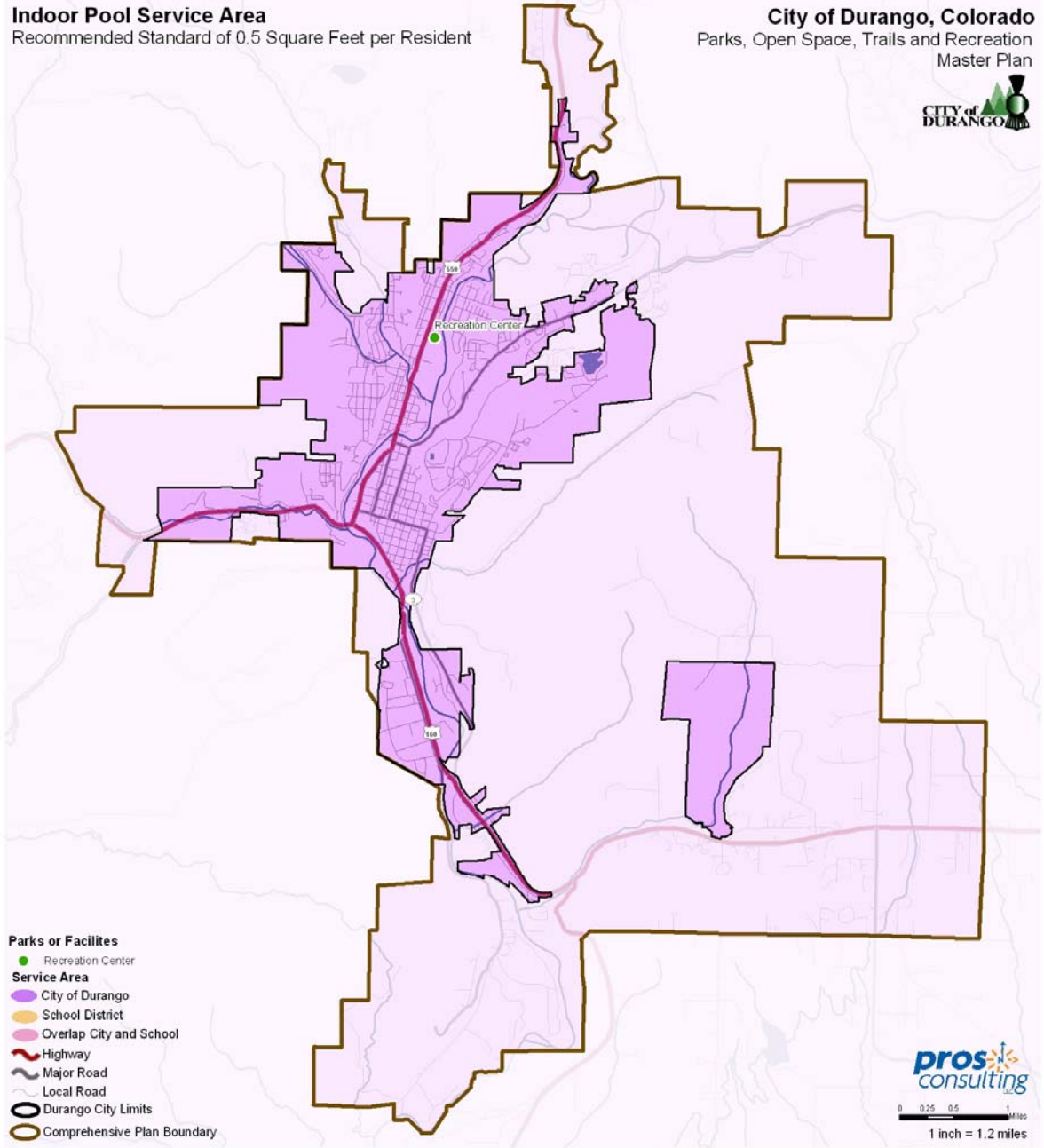


Figure 31 - Indoor Pool Service Area



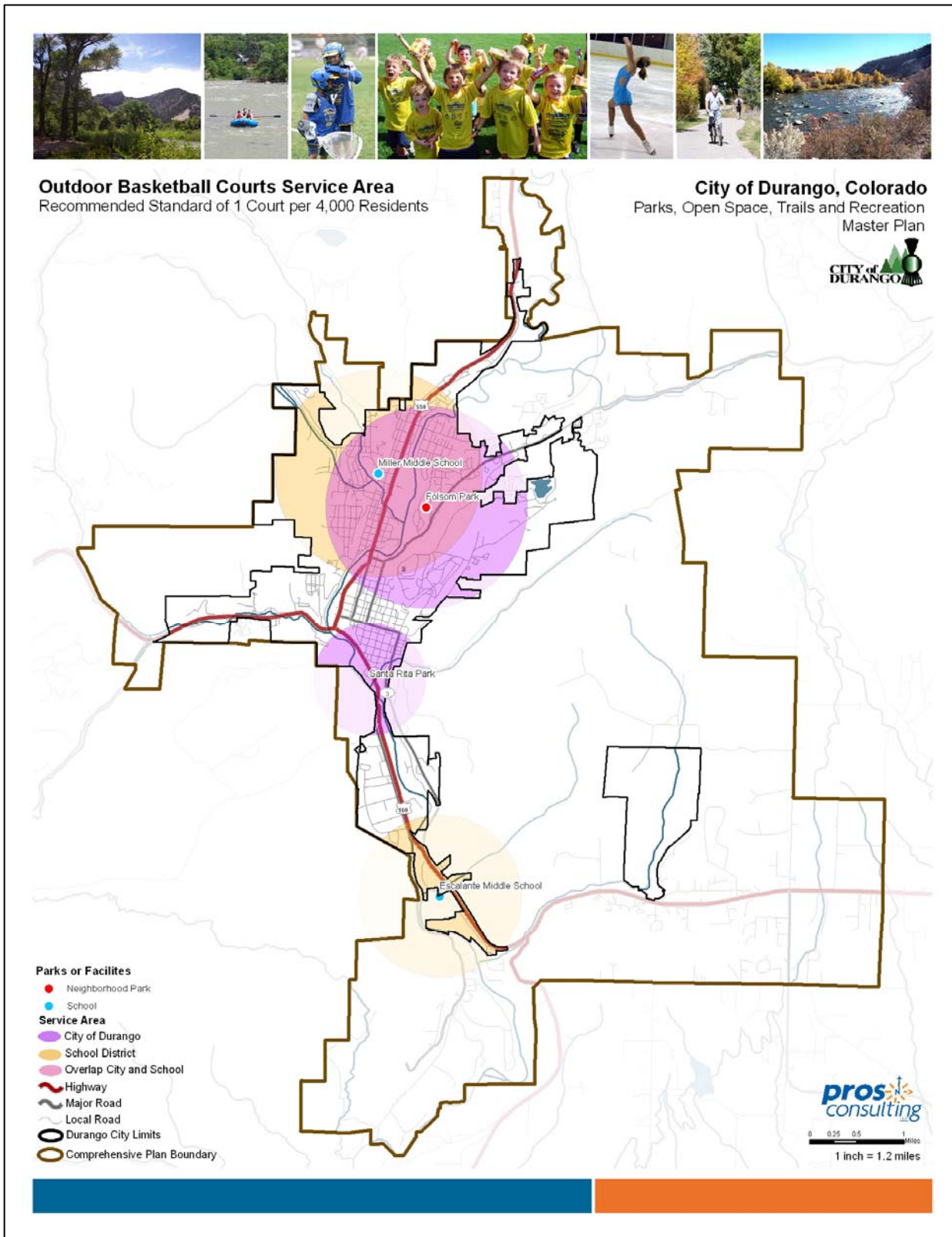


Figure 32 - Outdoor Basketball Court Service Area