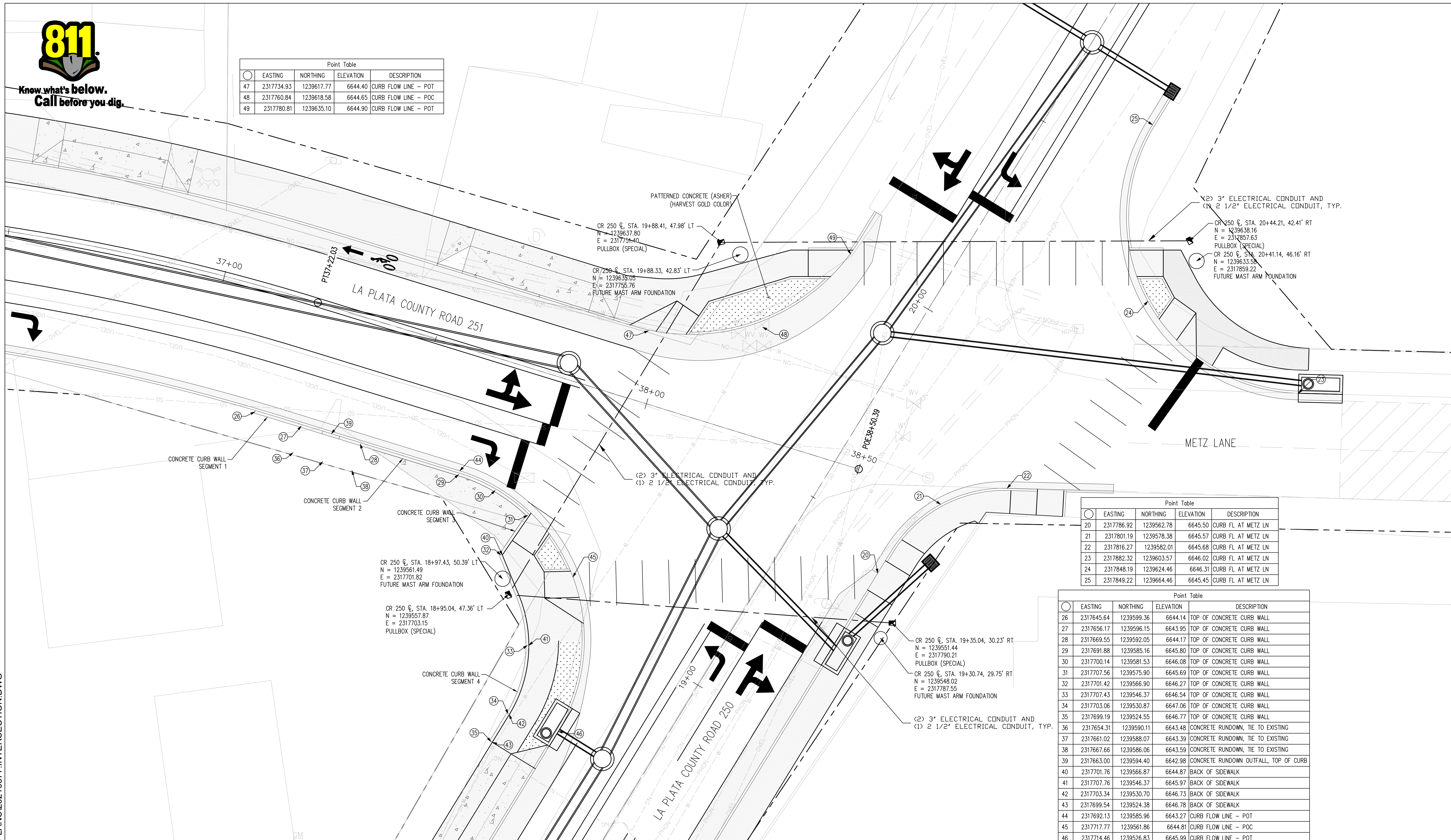




Know what's below.
Call before you dig.

Point Table				
POINT	EASTING	NORTHING	ELEVATION	DESCRIPTION
47	2317734.93	1239617.77	6644.40	CURB FLOW LINE - POT
48	2317760.84	1239618.58	6644.65	CURB FLOW LINE - POC
49	2317780.81	1239635.10	6644.90	CURB FLOW LINE - POT



Point Table				
POINT	EASTING	NORTHING	ELEVATION	DESCRIPTION
20	2317786.92	1239562.78	6645.50	CURB FL AT METZ LN
21	2317801.19	1239578.38	6645.57	CURB FL AT METZ LN
22	2317816.27	1239582.01	6645.68	CURB FL AT METZ LN
23	2317882.32	1239603.57	6646.02	CURB FL AT METZ LN
24	2317848.19	1239624.46	6646.31	CURB FL AT METZ LN
25	2317849.22	1239664.46	6645.45	CURB FL AT METZ LN

Point Table				
POINT	EASTING	NORTHING	ELEVATION	DESCRIPTION
26	2317645.64	1239599.36	6644.14	TOP OF CONCRETE CURB WALL
27	2317656.17	1239596.15	6643.95	TOP OF CONCRETE CURB WALL
28	2317669.55	1239592.05	6644.17	TOP OF CONCRETE CURB WALL
29	2317691.88	1239585.16	6645.80	TOP OF CONCRETE CURB WALL
30	2317700.14	1239581.53	6646.08	TOP OF CONCRETE CURB WALL
31	2317707.56	1239575.90	6645.69	TOP OF CONCRETE CURB WALL
32	2317701.42	1239566.90	6646.27	TOP OF CONCRETE CURB WALL
33	2317707.43	1239546.37	6646.54	TOP OF CONCRETE CURB WALL
34	2317703.06	1239530.87	6647.06	TOP OF CONCRETE CURB WALL
35	2317699.19	1239524.55	6646.77	TOP OF CONCRETE CURB WALL
36	2317654.31	1239590.11	6643.48	CONCRETE RUNDOWN, TIE TO EXISTING
37	2317661.02	1239588.07	6643.39	CONCRETE RUNDOWN, TIE TO EXISTING
38	2317667.66	1239586.06	6643.59	CONCRETE RUNDOWN, TIE TO EXISTING
39	2317663.00	1239594.40	6642.98	CONCRETE RUNDOWN OUTFALL, TOP OF CURB
40	2317701.76	1239566.87	6644.87	BACK OF SIDEWALK
41	2317707.76	1239546.37	6645.97	BACK OF SIDEWALK
42	2317703.34	1239530.70	6646.73	BACK OF SIDEWALK
43	2317699.54	1239524.38	6646.78	BACK OF SIDEWALK
44	2317692.13	1239585.96	6643.27	CURB FLOW LINE - POT
45	2317717.77	1239618.86	6644.81	CURB FLOW LINE - POC
46	2317714.46	1239526.83	6645.99	CURB FLOW LINE - POT

P:\2021\10377\ENGIN\PLANS\202110377 INTERSECTION.DWG

PLOTTED BY: DANIEL POHLEN, 3/15/2021 5:43 PM
 HORIZ. SCALE: N/A VERT. SCALE: N/A

 www.bhinc.com 800.877.5332
 9785 Maroon Circle Suite 140 Englewood, CO 80112-5928

SHEET REVISIONS			
R-X	DATE	DESIGNER:	INITIALS



THE CITY OF DURANGO
 DEPARTMENT OF COMMUNITY
 DEVELOPMENT
 1235 CAMINO DEL RIO
 DURANGO, CO 81301
 PHONE: 970-375-4850

AS CONSTRUCTED
 NO REVISIONS:
 REVISED:
 VOID:

COUNTY ROAD 251 AND 250 IMPROVEMENT DESIGN SIGNAL AND INTERSECTION PLAN			
DESIGNER:	STR. NO'S.	SHEETS:	
KWH	N/A	SIG-01 OF 01	
DGJ	N/A		
SUBSET: SIGNAL			

PROJECT NO./CODE	
	X
	X
SHEET NUMBER	15

MARCH 15, 2021 - PRELIMINARY DESIGN - NOT FOR CONSTRUCTION