

CHAPTER EIGHT - STANDARDS, EQUITY MAPPING & GREENPRINTING

8.1 FACILITY STANDARDS

Facility Standards are guidelines that define service areas based on population that support investment decisions related to parks, facilities and amenities. Facility Standards can and will change over time as the program lifecycles change and demographics of a community change.

PROS evaluated park facility standards using a combination of resources. These resources included: National Recreation and Park Association (NRPA) guidelines, recreation activity participation rates reported by American Sports Data as it applies to activities that occur in the United States and the Durango area, community and stakeholder input, findings from the prioritized needs assessment report and general observations by PROS. This information allowed standards to be customized to the City of Durango (**Figure 15**).

Based on 168.7 acres of current park land and a population of 15,632, the standard for park acres is 15.5 acres per 1,000 persons. The recommended 2009 standard is 15.5 acres per 1,000, which means that the City currently needs 74 acres of park land. Also, in light of the City’s population growth over the next 10 years there is an anticipated need for 110 total acres of park land.

These facility standards should be viewed as a guide. The standards are to be coupled with conventional wisdom and judgment related to the particular situation and needs of the community. By applying these facility standards to the population of Durango, gaps and surpluses in park and facility/amenity types are revealed.

The purpose of establishing level of service standards for parks and recreation facilities is to ensure adequate provision of facilities and equal opportunity for residents. Although measuring equal opportunity will never be an exact science, five measures can help provide a reasonable assessment: (1) Amount of park land in acreage; (2) Distance or travel time to access; (3) Capacity of facilities; (4) Quality of experience; (5) Availability of programs and activities.

The standards used for the Master Plan are based upon the amount of acreage of park land, miles of trails or number of recreational amenities. The distance or travel time is an important measure of service. The City of Durango standards for distance are as follows:

Park Type	Size	Service Area
Mini	Less than 1 acre	¼ mile radius
Neighborhood	1 to 10 acres	½ mile radius
Community	10 to 100 acres	2 mile radius
District	More than 100 acres	5 mile radius

The Facility/Amenity Standards Matrix is a graphical representation of the data presented in the Service Area Analysis.



City of Durango Facility Standards

PARKS: Current 2009 Inventory - Developed Facilities														2009 Facility Standards		2019 Facility Standards	
Park Type	Durango Inventory	Schools / La Plata County Inventory (Discounted)	Schools / La Plata County Inventory (Original)	Total Combined Inventory	Current Service Level based upon population			Recommended Service Levels;			Meet Standard/ Need Exists	Additional Facilities/ Amenities Needed	Meet Standard/ Need Exists	Additional Facilities/ Amenities Needed			
Mini Parks	2.61			2.61	0.17	acres per	1,000	0.50	acres per	1,000	Need Exists	5 Acre(s)	Need Exists	6 Acre(s)			
Neighborhood Parks	38.92			38.92	2.49	acres per	1,000	3.00	acres per	1,000	Need Exists	8 Acre(s)	Need Exists	15 Acre(s)			
Community Parks	25.78			25.78	1.65	acres per	1,000	5.00	acres per	1,000	Need Exists	52 Acre(s)	Need Exists	64 Acre(s)			
Linear Parks / Greenways	105.36			105.36	6.74	acres per	1,000	7.00	acres per	1,000	Need Exists	4 Acre(s)	Need Exists	20 Acre(s)			
Total Park Acres	172.67			172.67	11.05	acres per	1,000	15.50	acres per	1,000	Need Exists	70 Acre(s)	Need Exists	106 Acre(s)			
Open Space Natural Areas	1,510.61			1,510.61	96.64	acres per	1,000	n/a	acres per	1,000		Acre(s)		Acre(s)			
Special Use Areas	44.41			44.41	2.84	acres per	1,000	n/a	acres per	1,000		Acre(s)		Acre(s)			
OUTDOOR AMENITIES:																	
Playgrounds	17.00	3.00	6.00	20.00	1.00	structure per	782	1.00	structure per	1,000	Meets Standard	- Structures(s)	Meets Standard	- Structures(s)			
Picnic Pavilion/ Shelter	14.00	2.00	4.00	16.00	1.00	structure per	977	1.00	structure per	1,000	Meets Standard	- Structures(s)	Need Exists	2 Structures(s)			
Skate Park	1.00	-	-	1.00	1.00	structure per	15,632	1.00	structure per	20,000	Meets Standard	- Structures(s)	Meets Standard	- Structures(s)			
Baseball 200 ft.	1.00	0.50	2.00	1.50	1.00	field per	10,421	1.00	field per	5,000	Need Exists	2 Field(s)	Need Exists	2 Field(s)			
Baseball 300 ft.	-	1.00	4.00	1.00	1.00	field per	15,632	1.00	field per	4,000	Need Exists	3 Field(s)	Need Exists	3 Field(s)			
Softball Adult	-	0.75	3.00	0.75	1.00	field per	20,843	1.00	field per	5,000	Need Exists	2 Field(s)	Need Exists	3 Field(s)			
Softball Youth	-	-	-	-	1.00	field per	n/a	1.00	field per	7,500	Need Exists	2 Field(s)	Need Exists	2 Field(s)			
Soccer Regulation	-	0.75	3.00	0.75	1.00	field per	20,843	1.00	field per	4,000	Need Exists	3 Field(s)	Need Exists	4 Field(s)			
Soccer Youth	1.00	-	-	1.00	1.00	field per	15,632	1.00	field per	7,500	Need Exists	1 Field(s)	Need Exists	1 Field(s)			
Multi-Purpose Fields	2.00	1.25	5.00	3.25	1.00	field per	4,810	1.00	field per	2,000	Need Exists	5 Field(s)	Need Exists	6 Field(s)			
Outdoor Basketball Courts	2.00	1.00	2.00	3.00	1.00	court per	5,211	1.00	court per	4,000	Need Exists	1 Court(s)	Need Exists	1 Court(s)			
Tennis Courts	4.00	2.00	8.00	6.00	1.00	court per	2,605	1.00	court per	2,000	Need Exists	2 Court(s)	Need Exists	3 Court(s)			
Trails (all surface miles)	94.89	-	-	94.89	6.07	miles per	1,000	2.00	miles per	1,000	Meets Standard	- Mile(s)	Meets Standard	- Mile(s)			
Off leash Area	1.00	-	-	1.00	1.00	site per	15,632	1.00	site per	20,000	Meets Standard	- Site(s)	Meets Standard	- Site(s)			
Outdoor Pool	-	-	-	-	1.00	site per	n/a	1.00	site per	20,000	Need Exists	1 Site(s)	Need Exists	1 Site(s)			
Aquatic Center/Indoor Pool (Square Feet)	21,493			21,493	1.37	SF per person	0.50	SF per person			Meets Standard	- Square Feet	Meets Standard	- Square Feet			
Recreation/Community Center Space (Square Feet)	95,181	4,672	18,686	99,853	6.39	SF per person	2.00	SF per person			Meets Standard	- Square Feet	Meets Standard	- Square Feet			

Estimated Population - 2009	15,632
Estimated Population - 2019	17,964

Notes:

School / County sports inventory and recreation community center space discounted by 75% based on actual time available to the community

School / County playgrounds, picnic pavilions and outdoor basketball courts discounted by 50% based on actual time available to the community

Figure 15 - City of Durango Facility/Amenity Standards

8.2 EQUITY MAPPING/SERVICE AREA ANALYSIS

Service area maps and standards assist key leadership with the ability to assess where services are offered, how equitable the service distribution and delivery is across the Durango service area, and how effective the service is as it compares to the demographic densities. In addition, looking at guidelines with reference to population enables the City to assess gaps in services, where facilities are needed, or where an area is over saturated. This allows City management to make appropriate capital improvement decisions based upon need for a system as a whole.

As outlined in the previous Standards section of the Master Plan, it was noted that schools and La Plata County facilities used by the City are discounted by an amount reflecting the actual percentage of time the public can use the facilities. For example, school playgrounds are discounted 50% as they are only available 50% of the time. These percentage discounts of either 50 or 75% are noted throughout the following section.

Figures 16-35 show the service area maps that were developed for each of the following major assets:

- Neighborhood Parks
- Recreation/Community Centers
- Community Parks
- Linear Parks
- Playgrounds
- Picnic Pavilions/Shelters
- Baseball Fields – 300 ft.
- Baseball Fields – 200 ft.
- Youth Softball Fields
- Adult Softball Fields
- Youth Soccer Fields
- Regulation Soccer Fields
- Skate Parks
- Tennis Courts
- Trails (All Surfaces)
- Indoor Pools
- Basketball Courts
- Off-Leash Areas
- Multipurpose Fields

- Mini Parks

The source for the population used for standard development is the estimated 2009 population and projected 2019 populations as reported by Environmental Systems Research Institute, Inc. (ESRI). Estimated population for 2009 is 15,632; 2019 population is projected at 17,964. Projected 2019 service areas were compared for each asset mapped. The shaded areas in the Equity Maps indicate the service level i.e. the population being served by that park type/amenity as outlined in the Facility/Amenity Standards in **Section 8.1**.

8.2.1 NEIGHBORHOOD PARKS SERVICE AREA

Figure 16 demonstrates the locations of the neighborhood parks in the Durango service area and the associated population densities. The City has a total of 38.92 acres of neighborhood parks. This correlates to a current service level of 2.18 acres per 1,000 people. This map shows the recommended service level of 3.0 acres per 1,000 people. The City does not meet the recommended standard. To meet the 2009 recommended standard, the City will need to add 13.00 acres of neighborhood parks and 7.00 additional acres to serve the projected 2019 population, for a cumulative total of 20.00 additional acres. Currently there is a need for service in the central and southern regions of the City.

8.2.2 RECREATION/COMMUNITY CENTERS SERVICE AREA

Figure 17 demonstrates the locations of the community centers in the Durango service area and the associated population densities. The City has 99,853 community center square feet. This correlates to a current service level of 6.39 square feet per person. This map shows the recommended service level of 2.0 square feet per person. The City currently meets the recommended standard and will continue to do so to serve the projected 2019 population. While the recommended standard is met according to square footage amount, there is a need for service in the southernmost region of the City.

8.2.3 COMMUNITY PARKS SERVICE AREA

Figure 18 demonstrates the location of community parks in the Durango service area and the associated population densities. The City has 25.78 acres of community parks. This correlates to a current service level for community parks of 1.65 acres per 1,000 people. This map shows the recommended service level of 5.00 acres per 1,000 people. The City does not meet the recommended standard. To meet the current standard, the City needs to add 52.00 acres of community parks. To meet the standards for the projected 2019 population an additional 12.00 acres will need to be added for a total of 64.00 additional acres of community parks. Currently there is a need for service in the northeast and northwest regions of the City.

8.2.4 LINEAR PARKS

Figure 19 demonstrates the location of linear parks in the Durango service area and the associated population densities. The City has 105.36 acres of linear parks. This correlates to a current service level for linear parks of 6.7 acres per 1,000 people. This map shows the recommended service level of 7.00 acres per 1,000 people. The City does not meet the recommended standard or the projected need for 2019. To meet the current

recommended standards an additional 5.00 acres are needed. To meet the projected 2019 population an additional 16.00 acres will need to be added for a total of 21.00 additional acres of linear parks. Currently there is a need for service in the majority of the City, mainly in the eastern and southern regions.

8.2.5 PLAYGROUND SERVICE AREA

Figure 20 demonstrates the location of playgrounds in the Durango service area and the associated population densities. The City has 17 playground structures with Schools/La Plata County contributing a 50% Discounted Inventory of three structures for a total of 20 playgrounds. This correlates to a current service level for playgrounds of one structure per 782 people. This map shows the recommended service level of one structure per 1,000 people. The City meets the recommended standard and the projected need for 2019. While the recommended standard is met, there is a need for additional service in the southern regions of the City, based on the number of playgrounds located in the northern regions of the City.

8.2.6 PICNIC PAVILIONS / SHELTERS (100-199) SERVICE AREA

Figure 21 demonstrates the location of pavilion/shelters in the Durango service area and the associated population densities. The City has 14 pavilion/shelter structures with Schools/La Plata County contributing a 50% Discounted Inventory of two shelters for a total of 16 shelters. This correlates to a current service level for shelters of one structure per 977 people. This map shows the recommended service level of one structure per 1,000 people. The City meets the recommended standard but will need to add two shelters to meet the projected 2019 population. There is currently a need for shelters in the majority of the City as the existing shelters are predominantly located in the north central region of the City, with no coverage in the south central and south eastern part of the City.

8.2.7 300 FT. BASEBALL FIELDS SERVICE AREA

Figure 22 demonstrates the location of 300 ft. baseball fields in the Durango service area and the associated population densities. The City has no 300 ft. baseball fields with Schools/La Plata County contributing a 75% Discounted Inventory of one field for a total of one 300 ft. baseball field. This correlates to a current service level for 300 ft. baseball fields of one field per 15,632 people. This map shows the recommended service level of one field per 4,000 people. The City does not meet the recommended standard. To meet the 2009 recommended standard and to serve the projected 2019 population, the City will need to add three fields. Currently there is a need for additional service in the majority of the City as the only field is in the north central region.

8.2.8 200 FT. BASEBALL FIELDS SERVICE AREA

Figure 23 demonstrates the location of 200 ft. baseball fields in the Durango service area and the associated population densities. The City has one 200 ft. baseball field, with Schools/La Plata County contributing a 75% Discounted Inventory of .5 fields for a total of 1.5 fields. This correlates to a current service level for 200 ft. baseball fields of one field per 10,421 people. This map shows the recommended service level of one field per 5,000 people. The City does not meet the current recommended standard. To meet the 2009

recommended standard and to serve the projected 2019 population, the City will need to add two fields. Currently there is a need for additional service in the majority of the City as the only field is in the north central region.

8.2.9 YOUTH SOFTBALL FIELDS SERVICE AREA

Figure 24 demonstrates the location of youth softball fields in the Durango service area and the associated population densities. The City has no youth softball fields. This map shows the recommended service level of one field per 7,500 people. The City does not meet the recommended standard. To meet the 2009 recommended standard and to serve the projected 2019 population, the City will need to add two fields. Currently there is a need for additional service all over the City.

8.2.10 ADULT SOFTBALL FIELDS SERVICE AREA

Figure 25 demonstrates the location of adult softball fields in the Durango service area and the associated population densities. The City has no adult softball fields with Schools/La Plata County contributing a 75% Discounted Inventory of 0.75 fields for a total of 0.75 fields. This correlates to a current service level for adult softball fields of one field per 20,843 people. This map shows the recommended service level of one field per 5,000 people. The City does not meet the recommended standard. To meet the 2009 recommended standard the City will need to add two fields. To serve the projected 2019 population, the City will need to add one additional adult softball field for a total of three additional fields. Currently, there is a need for additional throughout the entire City as the only one seems to be in the north central region of the City.

8.2.11 YOUTH SOCCER FIELDS SERVICE AREA

Figure 26 demonstrates the location of youth soccer fields in the Durango service area and the associated population densities. The City has one youth soccer field. This correlates to a current service level for youth soccer fields of one field per 15,632 people. This map shows the recommended service level of one field per 7,500 people. The City does not meet the recommended standard. To meet the 2009 recommended standard and to serve the projected 2019 population, the City will need to add one field. Currently there is a need for additional service in the majority of the City as the only field is in the center of the City.

8.2.12 REGULATION SOCCER FIELDS SERVICE AREA

Figure 27 demonstrates the location of adult soccer fields in the Durango service area and the associated population densities. The City has no adult soccer fields with Schools/La Plata County contributing a 75% Discounted Inventory resulting in 0.75 fields for a total of 0.75 regulation soccer fields. This correlates to a current service level for regulation soccer fields of one field per 20,843 people. This map shows the recommended service level of one field per 4,000 people. The City does not meet the recommended standard. To meet the standards for the 2009 population, the City needs to add three fields. To meet the standards for the projected 2019 population, the City needs to add an additional one field for a total of four fields. Currently there is a need for additional service in the majority of the City as the only fields are in the central part of the City.

8.2.13 SKATEPARKS SERVICE AREA

Figure 28 demonstrates the location of skateparks in the Durango service area and the associated population densities. The City has one skatepark. This correlates to a current service level for skateparks of one park per 15,632 people. This map shows the recommended service level of one park per 20,000 people. The City does meet the recommended standards and the recommended standards for 2019.

8.2.14 TENNIS COURTS SERVICE AREA

Figure 29 demonstrates the location of tennis courts in the Durango service area and the associated population densities. The City has four tennis courts with Schools/La Plata County contributing a 75% Discounted Inventory resulting in two courts for a total of six courts. This correlates to a current service level for tennis courts of one court per 2,605 people. This map shows the recommended service level of one court per 2,000 people. The City does not currently meet the recommended standard. To meet the standards the City will need to add two courts. To meet the standards for the projected 2019 population an additional one court will need to be added for a total of three courts. Currently there is a need for additional service in the southern, northwest and central regions of the City.

8.2.15 TRAILS

Figure 30 demonstrates the location of trails in the Durango service area and the associated population densities. The City has 94.89 miles of trails. This correlates to a current service level for trails of 6.07 miles per 1,000 people. The recommended service level is 2.00 miles per 1,000 people. The City meets the recommended standard. There is currently a need for trails in the central region of the City.

8.2.16 INDOOR POOLS SERVICE AREA

Figure 31 demonstrates the location of indoor pools in the Durango service area and the associated population densities. The City has 21,493 square feet of indoor pools. This correlates to a current service level for indoor pool of 1.37 square feet per person. This map shows the recommended service level of 0.50 square feet per person. The City currently meets the recommended standard. While the recommended standard is being met, according to location there is a need for service in the southern and central regions of the City.

8.2.17 BASKETBALL COURTS SERVICE AREA

Figure 32 demonstrates the location of outdoor basketball courts in the Durango service area and the associated population densities. The City has two outdoor basketball courts with the Schools/La Plata contributing a 50% Discounted Inventory, resulting in one outdoor basketball court for a total of three courts. This correlates to a current service level for outdoor basketball courts of one court per 5,211 people. This map shows the recommended service level of one court per 4,000 people. The City does not meet the recommended standard. To meet the current standards and the standards for the 2019 population, the City needs to add one outdoor basketball court. There is currently a need for service in the majority of the City as the existing basketball courts are in the center of the City.

8.2.18 OFF LEASH AREAS SERVICE AREA

Figure 33 demonstrates the location of off leash parks in the Durango service area and the associated population densities. The City has one off leash (dog) park. This correlates to a current service level for off leash parks of one per 15,632 people. This map shows the recommended service level of one per 20,000 people. The City meets the current and projected recommended standards. There is no need for service as the entire City is well covered.

8.2.19 MULTIPURPOSE FIELDS SERVICE AREA

Figure 34 demonstrates the location of multipurpose fields in the Durango service area. The City has two multipurpose fields with the Schools/La Plata County contributing a 75% Discounted Inventory of 1.25 fields for a total of 3.25 multipurpose fields. This correlates to a current service level for multipurpose fields of one field per 4,810 people. This map shows the recommended service level of one field per 2,000 people. The City does not meet the current recommended standards. In order to meet the current recommended standard, the City will need to add five additional fields. To meet the projected 2019 needs, the City will need to add an additional field for a total of six additional fields. Currently a need exists in the majority of the city as the current fields are in the north central region of the City.

8.2.20 MINI PARKS SERVICE AREA

Figure 35 demonstrates the location of mini parks in the Durango service area and the associated population densities. The City has 2.61 acres of mini parks. This correlates to a current service level for mini parks of .26 acres per 1,000 people. This map shows the recommended service level of .50 acres per 1,000 people. The City does not meet the recommended standard. To meet the standard, the City needs to add four acres of mini parks and to meet the projected 2019 standards, an additional one acre for a total of five acres of mini parks. There is currently a need for service in the majority of the City as the existing parks are in the north central region of the City.



Neighborhood Park Service Area
Recommended Standard of 3 Acres per 1,000 Residents

City of Durango, Colorado
Parks, Open Space, Trails and Recreation
Master Plan

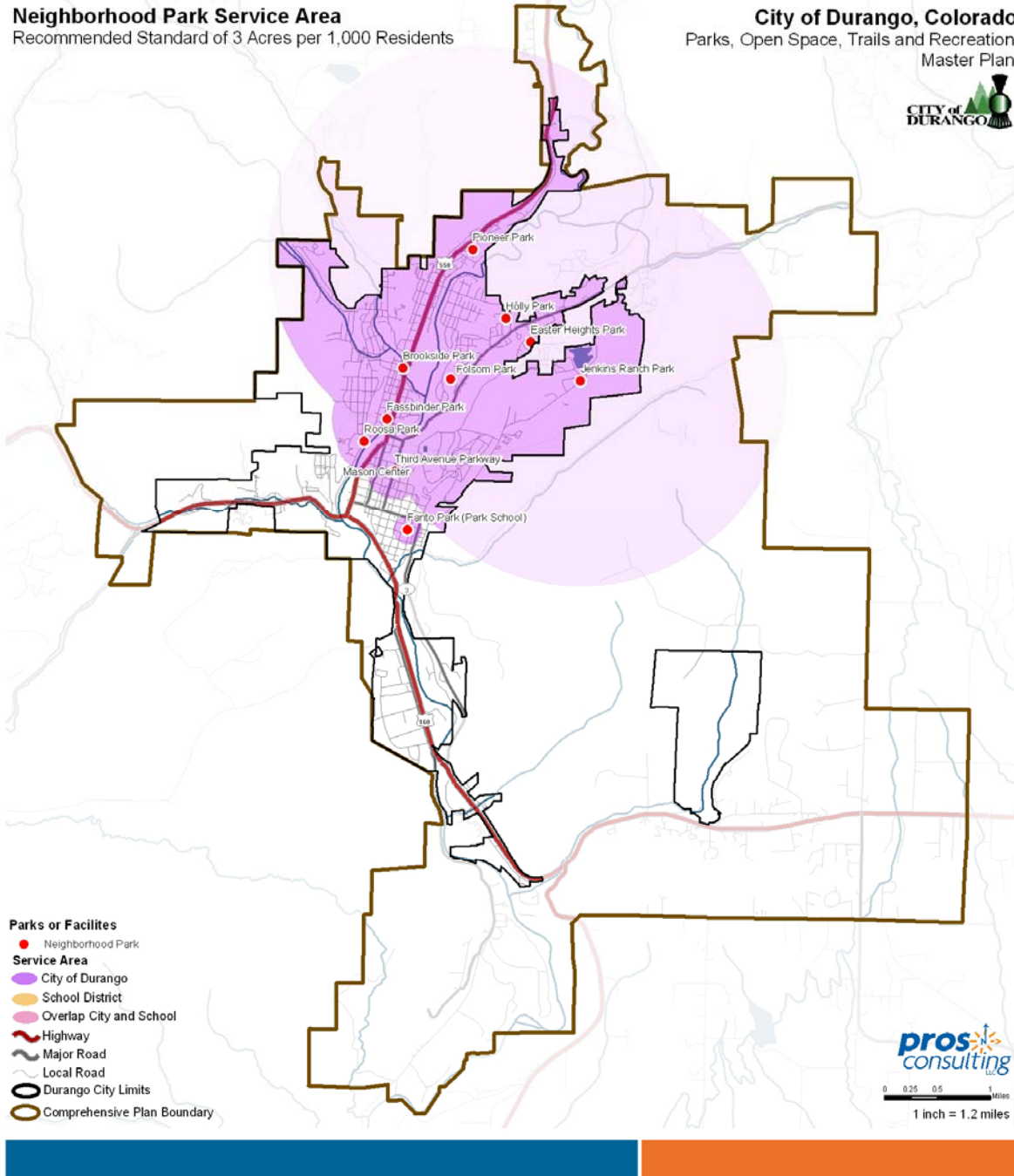


Figure 16 - Neighborhood Park Service Area



Recreation/Community Center Service Area
Recommended Standard of 2 Square Feet per Resident

City of Durango, Colorado
Parks, Open Space, Trails and Recreation
Master Plan

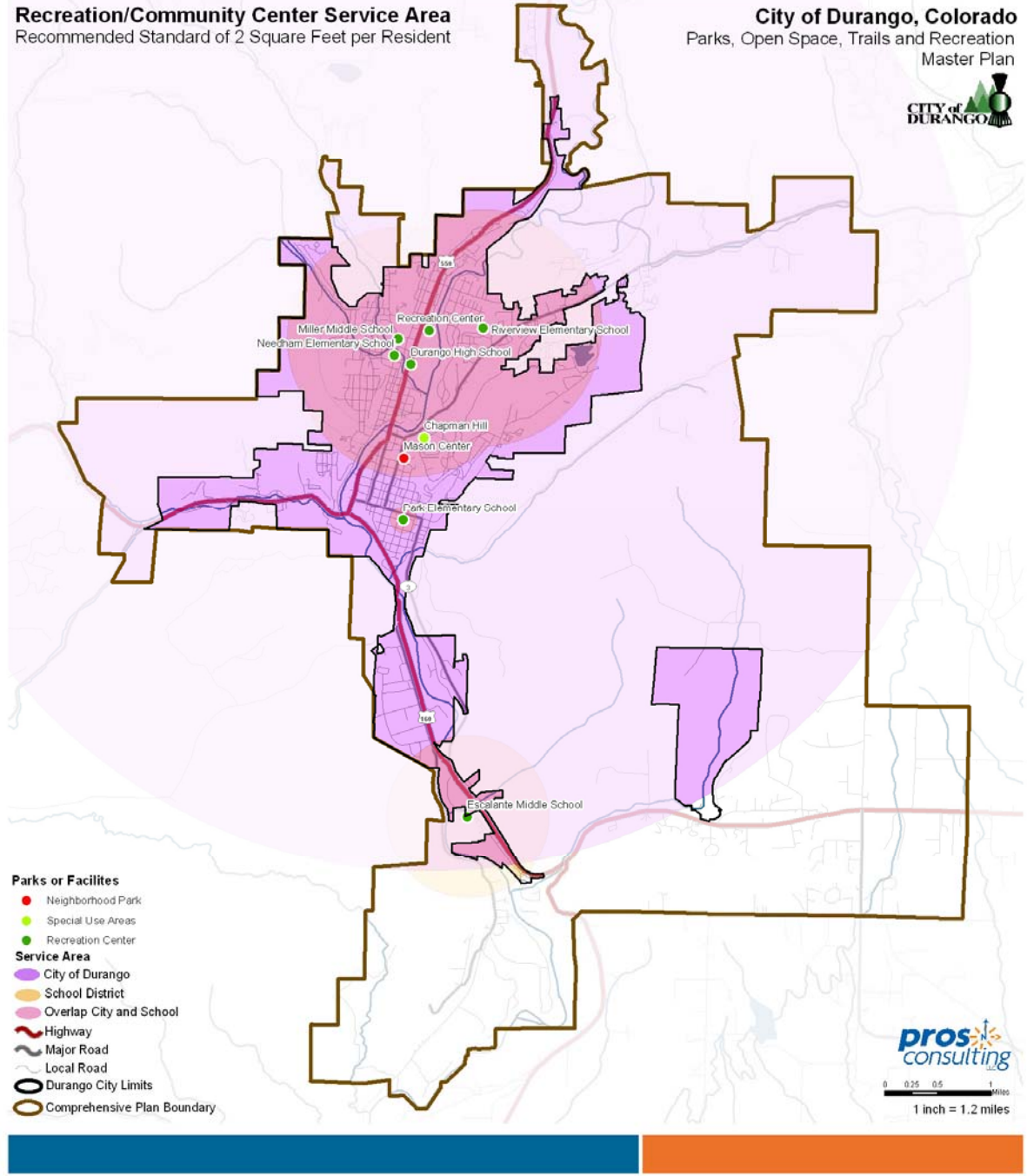


Figure 17 - Recreation/Community Center Service Area

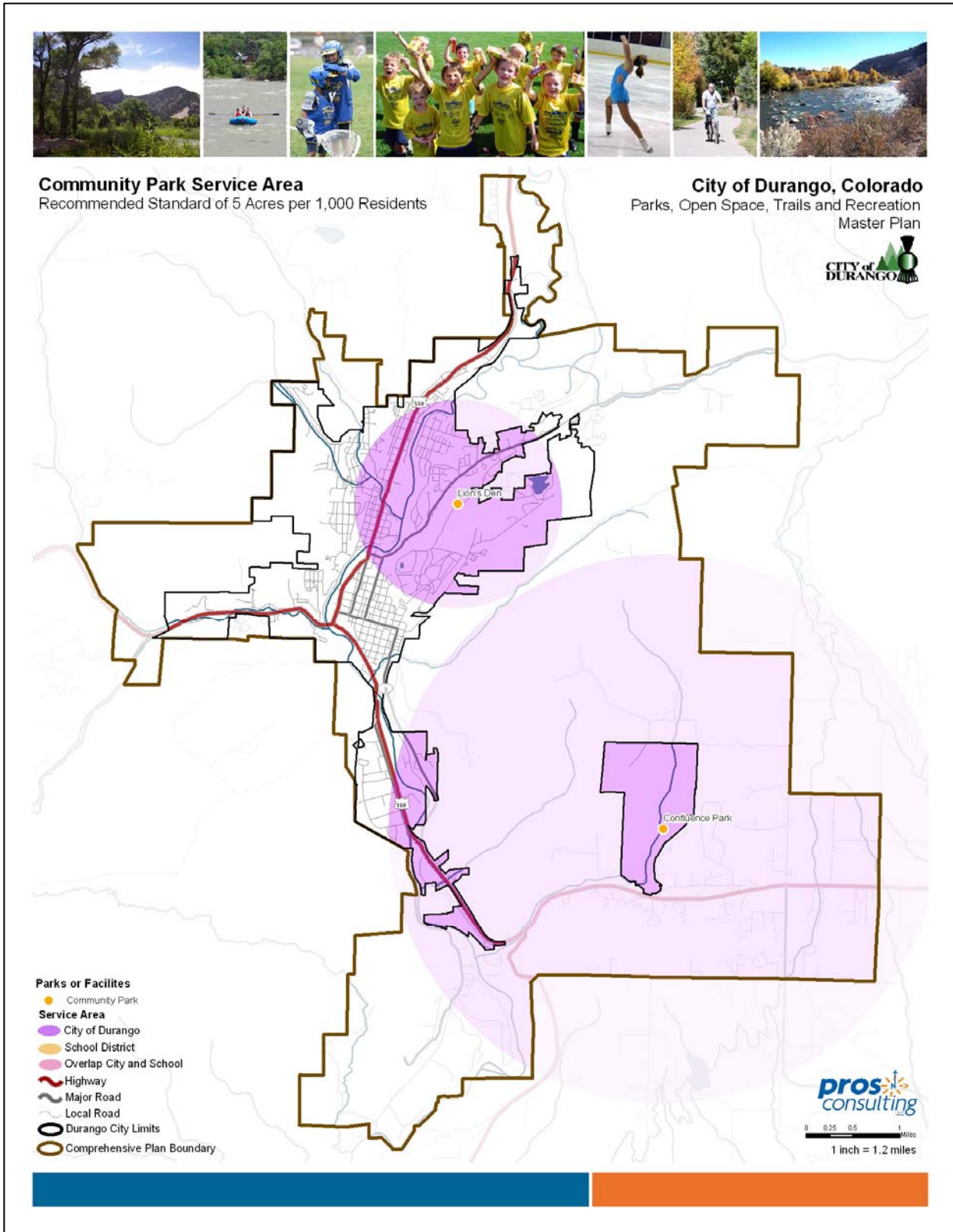


Figure 18 - Community Park Service Area