



Baseball 300 Feet Service Area
Recommended Standard of 1 Field per 5,000 Residents

City of Durango, Colorado
Parks, Open Space, Trails and Recreation
Master Plan

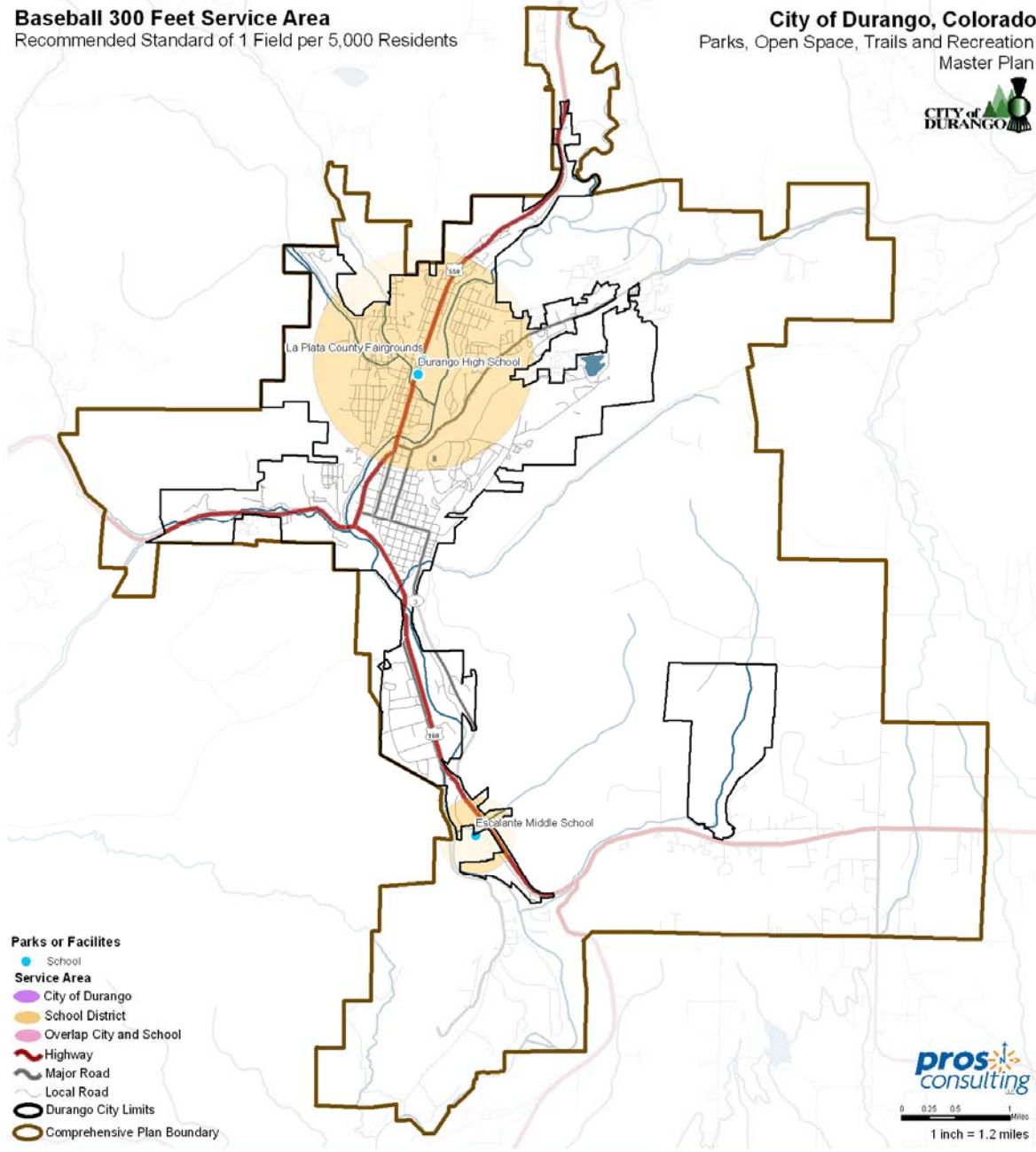


Figure 22 - Baseball 300 Feet Service Area



Baseball 200 Feet Service Area
Recommended Standard of 1 Field per 5,000 Residents

City of Durango, Colorado
Parks, Open Space, Trails and Recreation
Master Plan

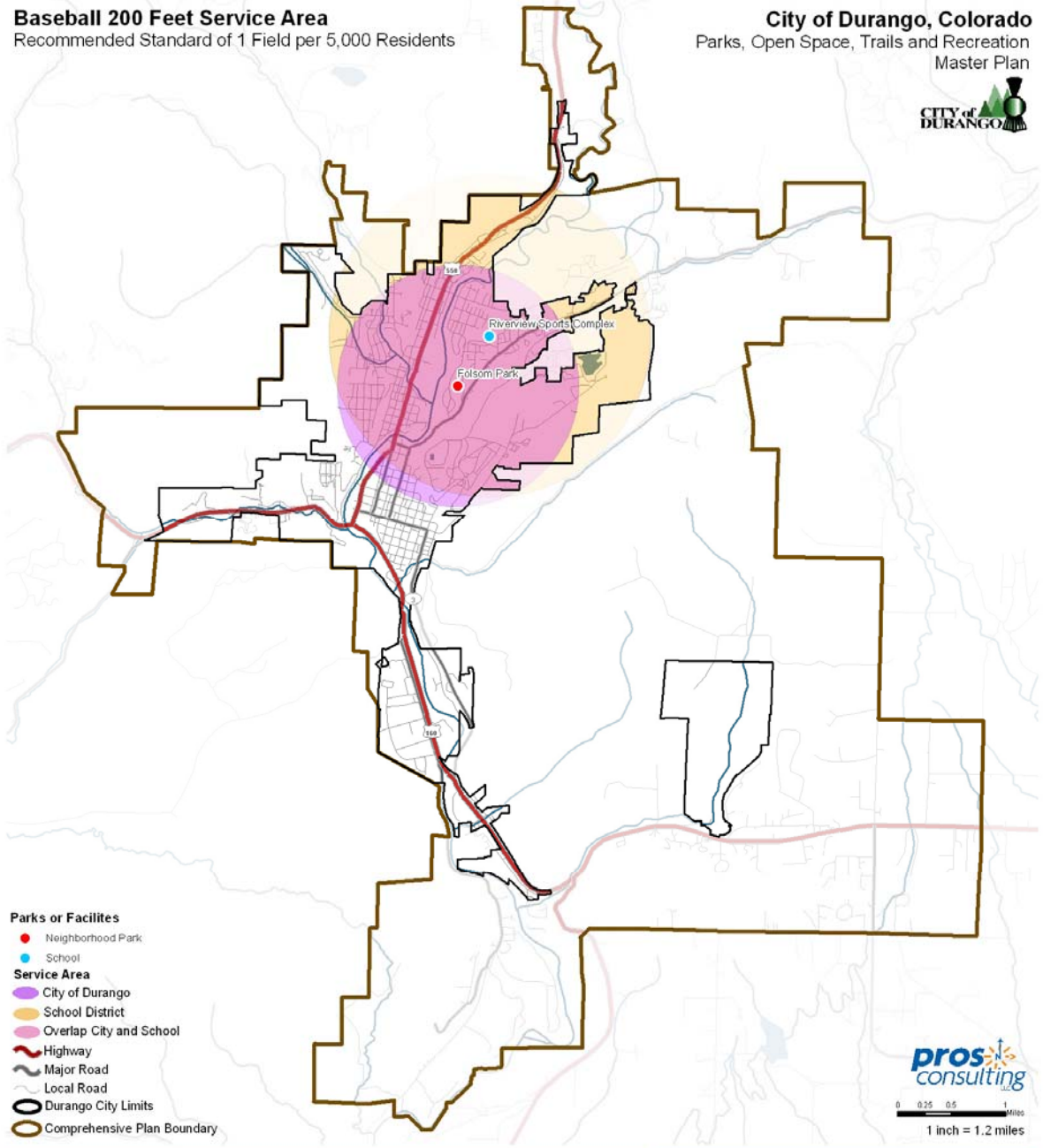


Figure 23 - Baseball 200 Feet Service Area

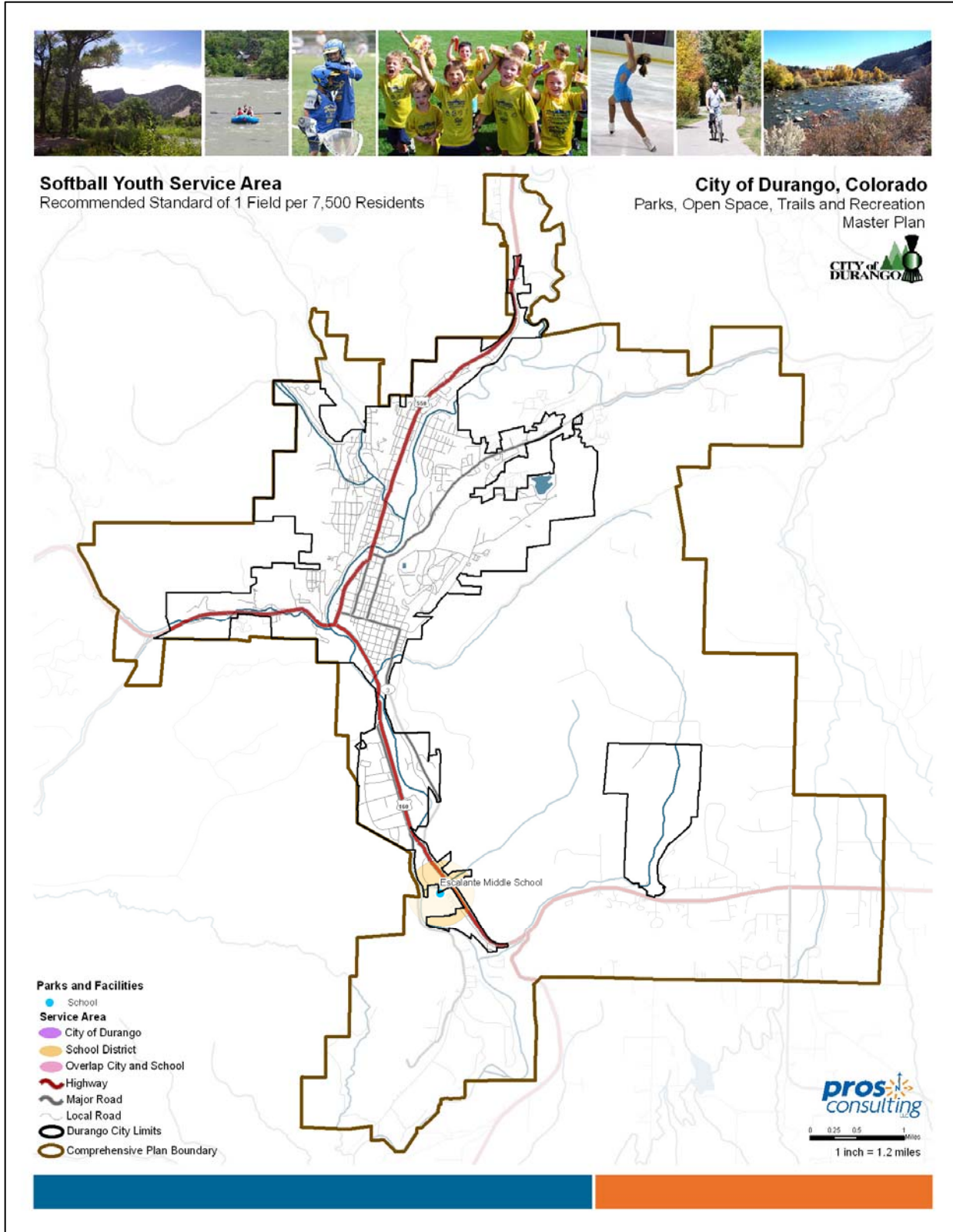


Figure 24 - Softball Youth Service Area



Softball Adult Service Area
Recommended Standard of 1 Field per 7,500 Residents

City of Durango, Colorado
Parks, Open Space, Trails and Recreation
Master Plan

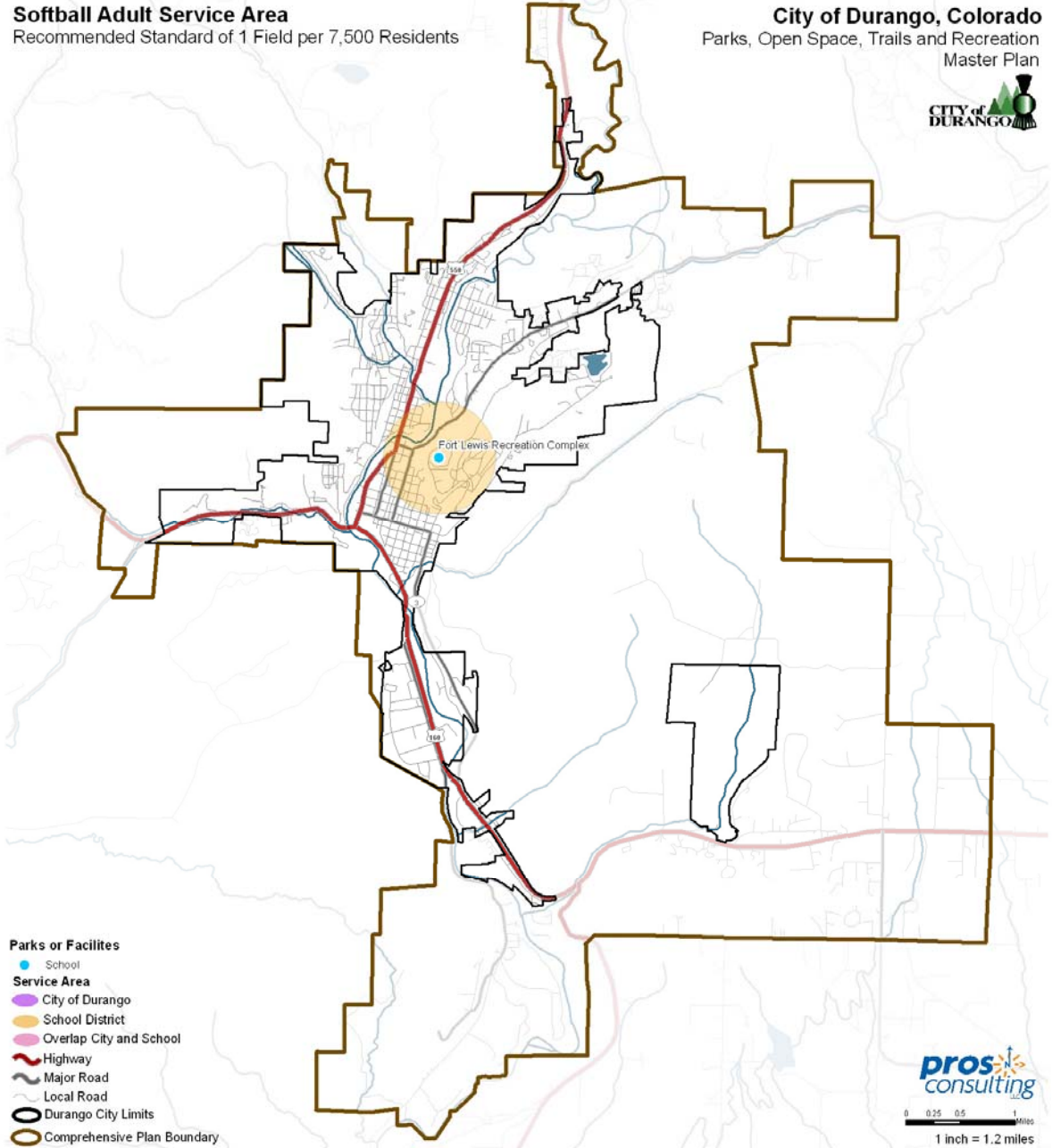


Figure 25 - Softball Adult Service Area