



**COLORADO**  
Department of Transportation

**City of Durango Media Contact:**  
Keith Dougherty  
Assistant City Engineer  
(970) 375-4818  
[Keith.Dougherty@DurangoGov.org](mailto:Keith.Dougherty@DurangoGov.org)

949 E. 2<sup>nd</sup> Avenue  
Durango, CO 81301  
[www.DurangoGov.org](http://www.DurangoGov.org)

**Follow us:**  
[Twitter.com/CityofDurango](https://twitter.com/CityofDurango)  
[Facebook.com/CityofDurango](https://facebook.com/CityofDurango)

**CDOT Media Contact:**  
Lisa Schwantes  
Southwest Regional  
Communications Manager  
(Region 5)  
(970) 385-1428  
[lisa.schwantes@state.co.us](mailto:lisa.schwantes@state.co.us)

---

FOR IMMEDIATE RELEASE, NOVEMBER 21, 2019

# NEWS RELEASE

## Motorists Should Expect Delays on Camino del Rio Near Town Plaza

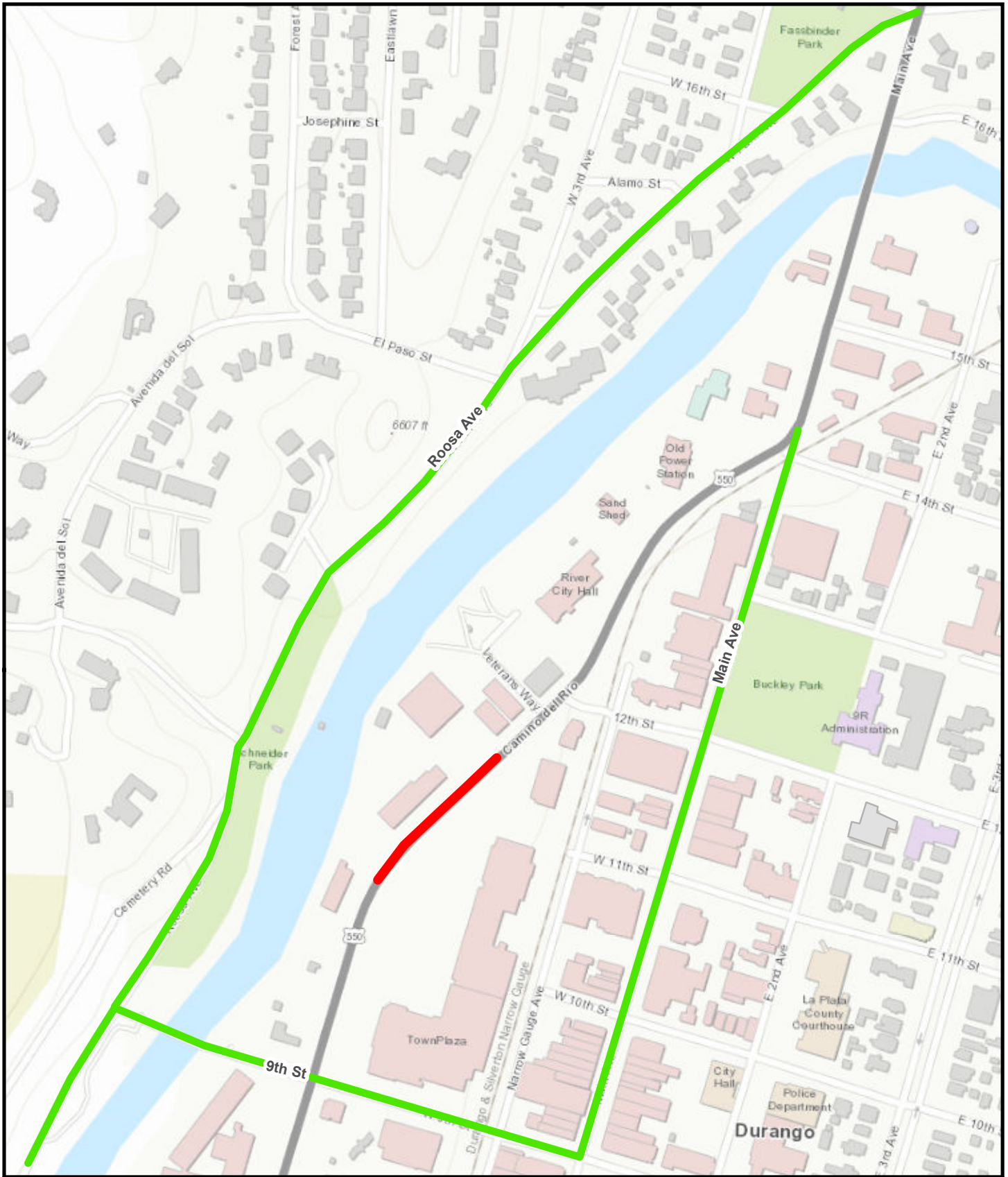
**Durango, CO:** Beginning Monday, December 2, motorists will experience delays while traveling on Camino del Rio near Town Plaza. The developer of the new 1111 Camino hotel project is coordinating with the City and the Colorado Department of Transportation (CDOT) to limit lanes of traffic for the construction of new water and sewer utility connections. The lane closures will also allow for the reconfiguration of the entrance and access to Natural Grocers. Business access will be maintained throughout the construction activity during normal business hours.

The new connections and access changes will be implemented in three phases over the coming weeks, and lane closures will shift as the phases progress. The work is expected to continue through mid-January and will include day and night-time work, with lane shifts in place during the entirety of the project. Motorists are encouraged to use caution when driving in the area or avoid the construction area and use detours if possible.

For more information about the 1111 Camino hotel project, please contact the City of Durango Community Development Department at (970) 375-4850 or CDOT at (970) 385-1423.

A map of the construction zone and proposed detours is attached to this release.

###



0 250 500 1,000 Feet

- Lane Closures
- Proposed Detours



## Camino Del Rio Closures

© Copyright 2019 City of Durango, Colorado. All rights reserved.  
 The information contained hereon is provided as a graphical representation only. MAC October 2019